



MR1BK
64-70 Mustang Rear Instructions

Kit Includes:

- MR-1000 - Rear Cradle
- MR-1100 - Bushing Lower Control Arm
- MR-3300 - Adj. Bushing Control Arm
- MR-3800 - Anti. Roll Kit

MR-1000 Hardware

- 6 Crush Sleeves— $\frac{3}{4}$ x $\frac{1}{2}$ x $1 \frac{3}{4}$
- 8 - $\frac{1}{2}$ -13 x 3" Bolts w/ Nylock nuts
- 2- $\frac{7}{8}$ x $\frac{1}{2}$ x $\frac{5}{8}$ Long Spacers
- 14 - $\frac{7}{16}$ USS Washers

MR-1100 Lower Arms

- 2 – Lower Control Arms
- 4- $\frac{3}{4}$ sleeves 2 $\frac{15}{16}$ " long
- 8- Urethane bushing energy suspension # 10003
- 2- $\frac{1}{2}$ -13 bolts 4 $\frac{1}{2}$ long
- 2- $\frac{1}{2}$ -13 bolts 5" long

MR-3300 Upper Adjustable Control Arms

- 2-Front Side
- 2-Rear Side
- 4- $\frac{1}{2}$ -13 bolts 4" long
- 4- $\frac{1}{2}$ -13 nylock nuts
- 4 – Black Urethane Bushings
- 2 – $\frac{3}{4}$.120 Sleeves x 2 $\frac{7}{16}$
- 2 – Jack Screw Adjuster $\frac{3}{4}$ -16 Threads (part # JSI-12)
- 2 – RH $\frac{3}{4}$ -16 Jam Nuts
- 2 – LH $\frac{3}{4}$ -16 Jam Nuts

MR-3800 Anti-Roll Kit

- 6 – 12 x 1.75 Bolts & 12mm x 30mm Nylock Nuts
- 2 – Spherical Bearings w/Clips Must Be Installed in Hangers
- 2 – $\frac{3}{8}$ -16 x $1 \frac{1}{4}$ Bolts/Nylock Nuts
- 2 – $\frac{5}{8}$ -11 x 2" Bolts w/#10-12 Mis- Alignment Bushings
- 2 – $\frac{3}{8}$ RH/LH Hex 3" w/ $\frac{3}{8}$ -24 x $2 \frac{1}{4}$ Bolts & LH $\frac{3}{8}$ -24 Rod Ends w/Jam Nuts and Sway Bar Bushings
- 1 – Anti Roll Spacing Between Arms 28- $\frac{1}{2}$

Tools Typically Used:

- Safety Glasses
- Mechanics Wrenches, Sockets and Torque Wrench
- Jack and Jack Stands
- Hammer, Punches and Chisel
- Spray on Rust Penetrant
- Drill, Drill bits 1/8, 1/2, 3/4
- Recommend a 3/8 or 1/2 Spot Weld Cutter
- Angle Grinder can be used instead of Spot Weld Cutter, only requires more clean-up

Kit requires:

87-93 Mustang Style rear-end housing
A Pair of coil-over shocks and springs with recommended installed (ride) height of 14 inches

Prior to Starting Installation

It is recommended to thoroughly clean the installation area prior to beginning. This will make locating the various attaching hardware and spot welds easier.

- Position the car on a solid, level and flat surface. Raise the car and SAFELY support it using jack stands.
- If the engine is still installed in the car, disconnect the battery.
- Remove the rear wheels.
- Disconnect and plug the brake hoses from the brake drum/caliper. Use plenty of rags or paper towels to control any spills of brake fluid. Dispose of used rags/paper towel properly after use.

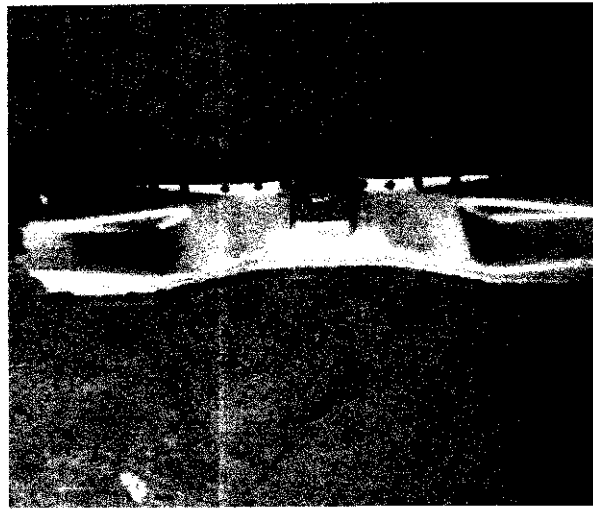
CAUTION:

**Brake fluid is toxic. It will also remove paint.
If brake fluid is spilled, clean up immediately.**

- Place a jack under rear-end housing and raise it to compress the spring slightly.

Remove all mounting hardware for springs and shocks so rear-end can be removed.

Remove spot welds that secure shock cross member to floor and frame rails. Hidden spot welds on both ends of cross member will not be accessible. Ends of cross member will need to be cut in order to remove it.

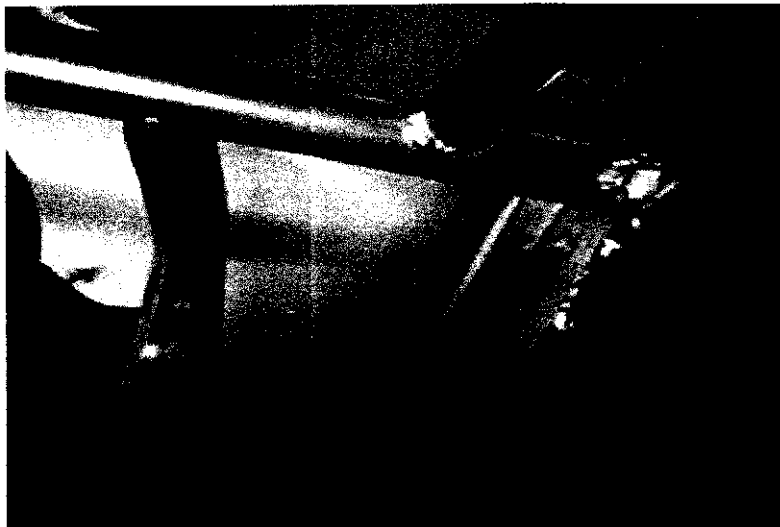


Once cross member is removed now with grinder clean excess tabs materials off inside and under frame rails.

Prep area for finish or welding before cross member is test fitted.

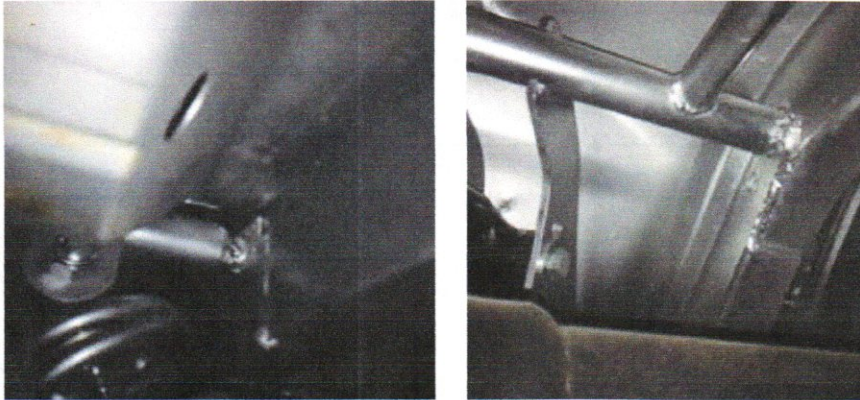
Start Installation

Place cradle up into frame rails and position lower tabs to bottom side of frame rails. This will generally give you a base location.



If bolting cradle into your car mark holes from cradle onto frame rails. These holes will be drilled to ½ inch through the frame rail. Outside or wheel well side need opened to a ¾ inch hole. This will allow crush sleeve to be installed. Use supplied hardware and sleeves.

If welding frame into car once located clamp in place before starting to weld.



Installing Control Arms

Lower arms mount into original spring locations with supplied hardware.

Upper control arms mount into one of four provisions on rear cradle.



Position rear end under car to attach control arms to provisions on housing. After positioning rear end, the lower control arms will attach in factory bracket location or in the added anti-roll hanger.



AJE tech support 812-346-7356 or 800-877-7233